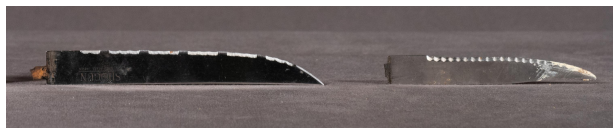


Object Summary



Set of two knife blades

Primary Maker

Shogun

Place of Manufacture

Japan

Dimensions

14.5-10.3 x 1.7-1.4 cm

Object Type

Cutlery [Knife]

Material

Stainless steel

Museum

Malta Maritime Museum

Registration Number

MMM 005239.2

Description

Two eating knives with serrated blades, missing tangs and handles. The shortest one has no markings, the longer knife is engraved SHOGUN STAINLESS STEEL JAPAN.